

Sigmar Polke, Capitalist Realism



Sigmar Polke, Capitalist Realism



Look at the artwork above by Sigmar Polke and are examples of what became known as Capitalist Realism. What do you think this means?

Sigmar Polke, Capitalist Realism

Task 1

Find three or more images of drawings, paintings or mixed-media pieces by Sigmar Polke (not sculptures). Include the title for each work, the media used and the dates they were produced.

Analyse the work using the **Artist Analysis Guidelines** on the following slide.

Artist Analysis Guidelines

Please remember all analysis must be in your own words, do not copy or paste as this plagiarism . Use quotations from artists within your analysis to back up opinions made.

What does the work make us think about?

Can you link any ideas, concepts or artists to the work?

Describing the artist's work and critically reflecting:

Form - This means looking at the formal elements of an artwork.

- • What colours does the artist use? Why? How is colour organised?
- • What techniques does the artist use?

Content -The content is the subject of a piece of work.

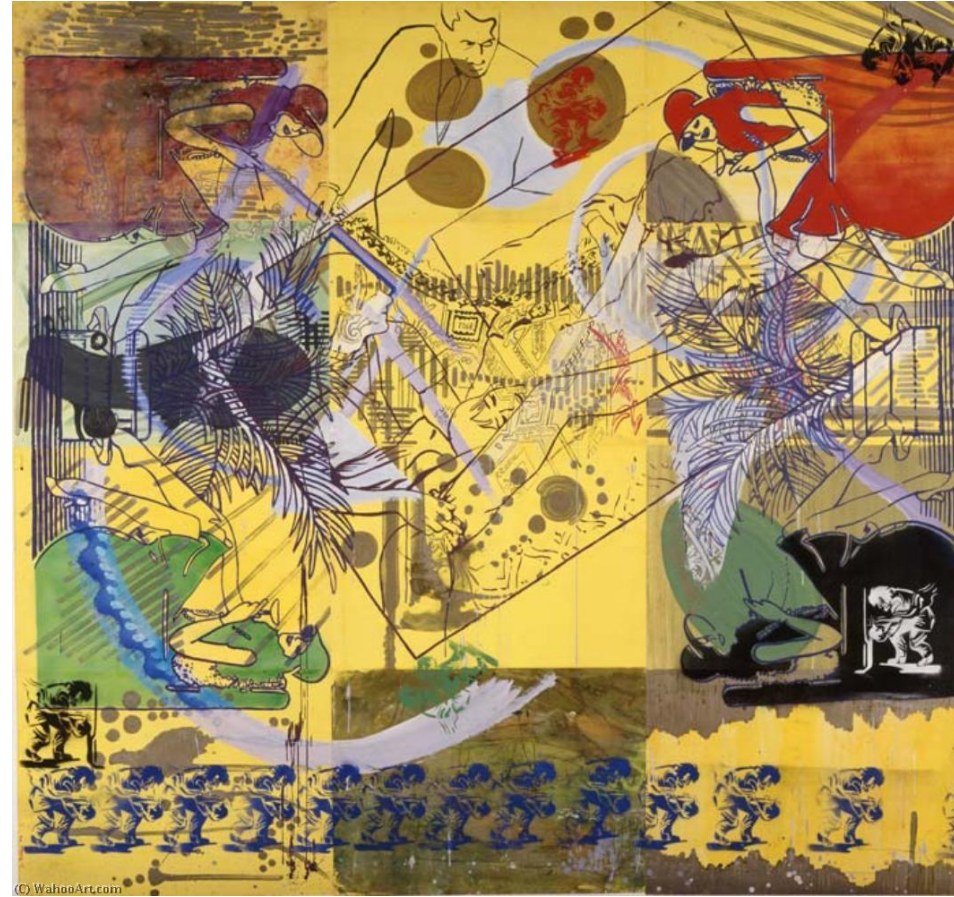
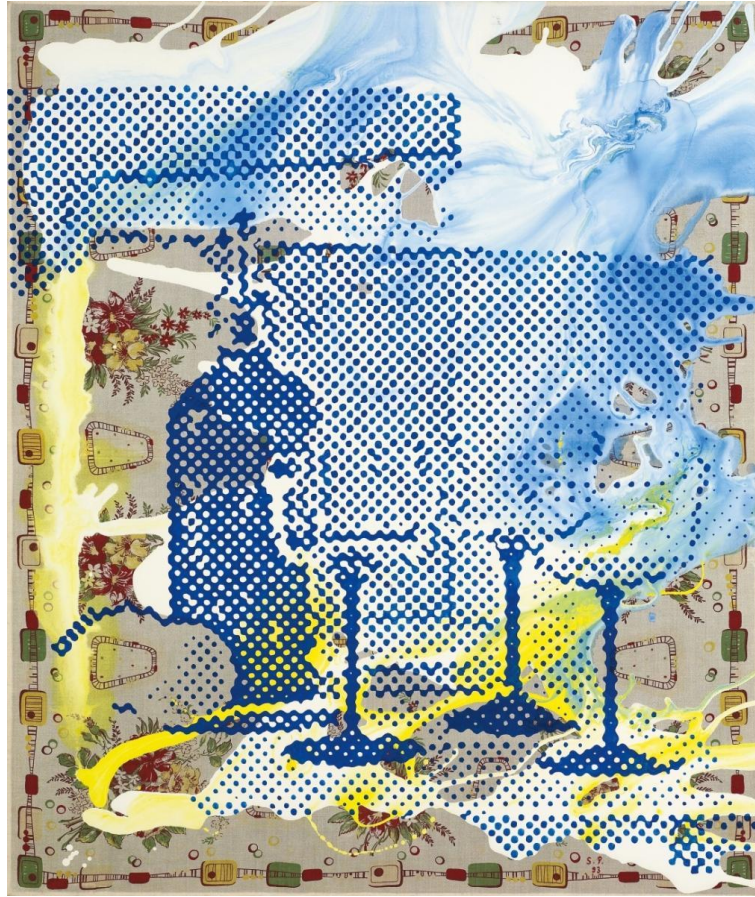
- • What is it e.g. painting, sculpture, etc? What is it about? What is happening?
- • What does the work represent?
- • The title - what does the artist call the work? Why?
- • Does the title change the way we see the work?
- • Have any parts been exaggerated or distorted? If so, why?



Task 2:

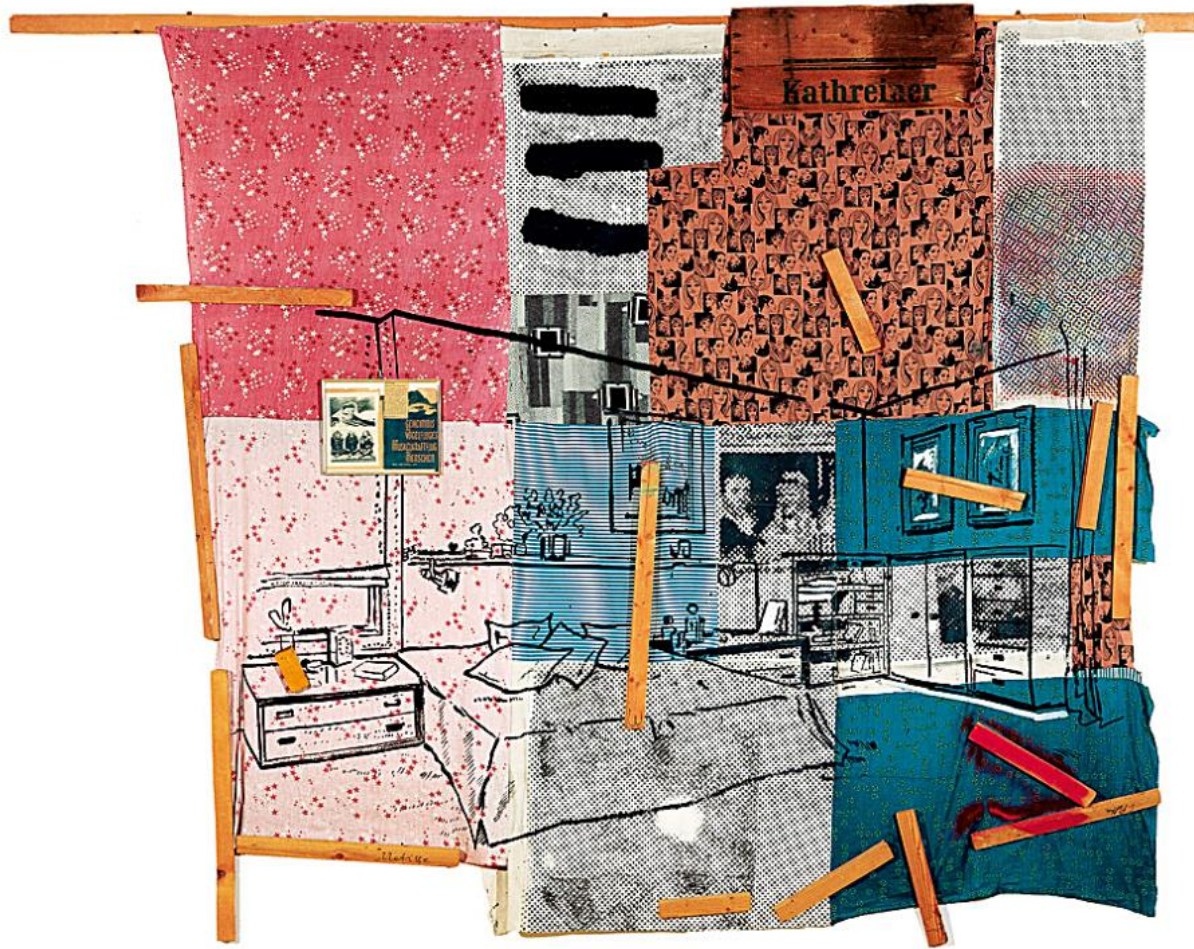
Paint or draw some examples of everyday objects that you find interesting in some way. It maybe their form, or perhaps their colour or texture that you find interesting. Please do not draw your phone! Arrange them so that they are positioned at an angle that you find interesting; position your objects in an organized way, like Polke.

Sigmar Polke



**'Kandinsdingsda'
Sigmar Polke**

Sigmar Polke is known for not having just one particular style. He uses images from magazines and comic books and transposes them onto his work, taking them out of their original context.



'Kathreiner's Morning Wood'

These images of Sigmar Polke's work show how he overlaps images to create a new one.

Task 3

Produce one or more images that use this technique

Select a range of images that you can overlap. These images may come from life, i.e. directly drawn from something in front of you or from photographs you have taken or have been taken by someone else such as magazine images.